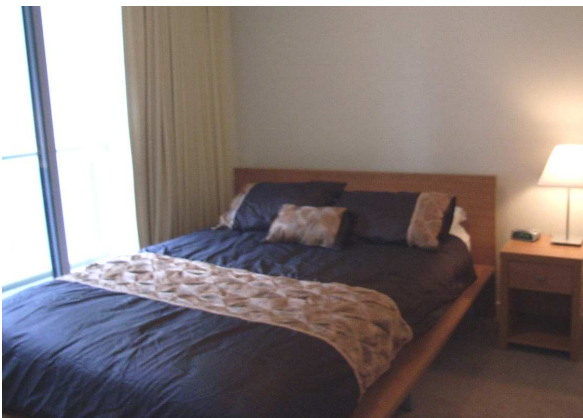


**219a Northbourne Ave,  
Braddon  
"Monarch"**

Located centrally in Canberra's CBD this three bedroom and two bathroom apartment is fully furnished throughout to executive standard.



Consisting of two levels, the three bedrooms and two bathrooms are located upstairs and the open plan living area downstairs which leads on to a balcony.



The modern kitchen is fully equipped with all you should require for a great home cooked meal.

Features of this apartment include air-conditioning, separate toilet downstairs and internal laundry.



Guests can enjoy the onsite facilities including a swimming pool, gym, and a spacious courtyard.

